



ARYN MAX Finishes Book

Fabrics / Leathers / Materials

Crestline[™]

Bases

Steel bases

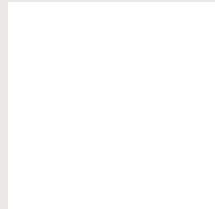
STANDARD COLORS



B00 Black



Aluminum

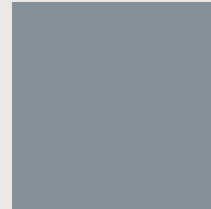


W01 White

OPTIONAL COLORS



B36 Navy blue



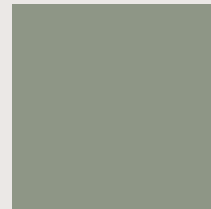
B44 Sky blue



G42 Light Gray



B40 Marine green



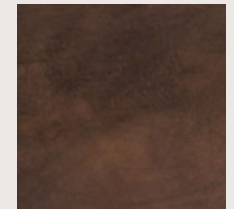
V16 / V74 SalviaGreen



M82 Stone

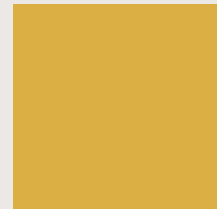


M56 Coffee brown

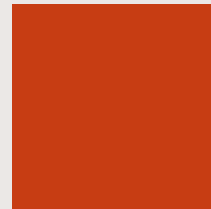


Rust Gray

CHROME



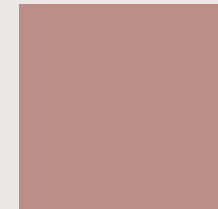
Y62 Mustard



O25 Clay orange



M38 Camel



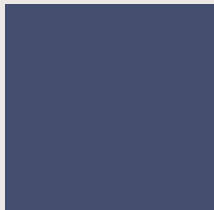
P70 Rose

Seats & backrests

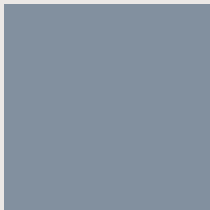
-

Plastic colors

STANDARD COLORS



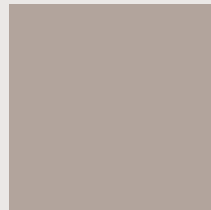
B36 Navy blue



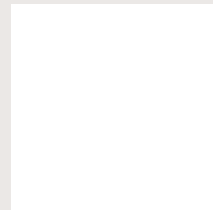
B44 Sky blue



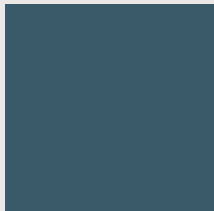
G42 Light Gray



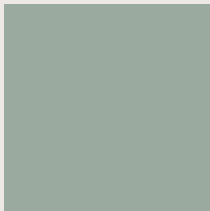
M82 Stone



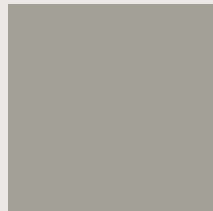
W01 White



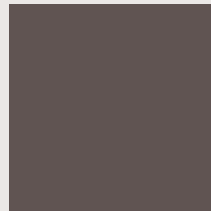
B40 Marine green



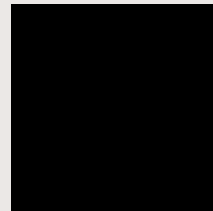
V16 Turquoise green



V74 Salvia Green



M56 Coffee brown



B00 Black



Y62 Mustard



O25 Clay orange



M38 Camel



P70 Rose

G1 Bond / Duo

DATA SHEET - BOND

Composition:

100% polyolefin.

Lightfastness:

6 - 7 UNE-EN ISO 105-B02: 2001

+ A1: 2002. Method 2

Abrasion:

40,000 Martindale EN ISO 12947-2: 1999.

Resistance to pilling:

4 - 5, UNE-EN 14465: 2004

+ A1: 2007, UNE-EN ISO 12945-2: 2001.

Dye fastness to rubbing:

Wet 4 - 5.

Dry 4 - 5, UNE-EN ISO 105-X12: 2003.

Tear Resistance:

Warp: 110N.

Weft: 100N UNE-EN ISO 13937-3: 2001.

Flammability:

EN 1021-1: 2006 (cigarette) • BS

5852: 2006 (cigarette) • DIN66084: 2003 P- c

classification • CALTB 117: 2000 Section E, part 1

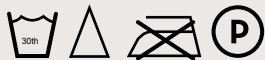
(CS191-53; CLASS 1) NFPA260: 2009 Cover fabric

CLASS 1.

With: 140cm

Weight: 240gr / m²

-



** Batch to catch variations may occur within commercial tolerances.*

DATA SHEET - DUO

Composition:

100% polyolefin.

Light fastness:

6 - 7, UNE-EN ISO 105-B02: 2001

+ A1: 2002. Method 2.

Abrasion:

40,000 Martindale EN ISO 12947-2.

Resistance to pilling:

4 - 5, UNE-EN 14465: 2004

+ A1: 2007, UNE-EN ISO 12945-2: 2001.

Dye fastness to rubbing:

Wet 4 - 5.

Dry 4 - 5, UNE-EN ISO 105-X12: 2003.

Tear Resistance:

Warp: 180N.

Weft: 160N UNE-EN ISO 13937-3: 2001.

Flammability:

EN 1021-1: 2006 (cigar) • BS 5852: 2006 (cigar) •

DIN 66084: 2003-07

P- c classification • CALTB 117: 2000 Section E,

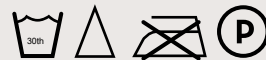
part 1 (CS191-53; CLASS 1) NFPA260: 2009

Cover fabric CLASS 1.

With: 140cm

Weight: 300gr / m²

-



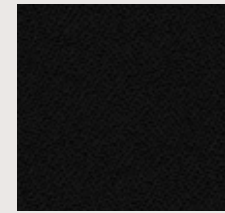
** Batch to catch variations may occur within commercial tolerances.*



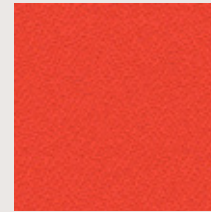
BOND 81



BOND 5518



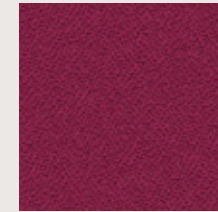
BOND 9



BOND 76



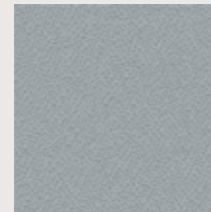
BOND 79



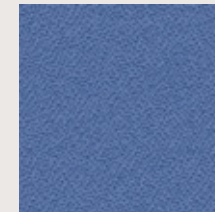
BOND 109



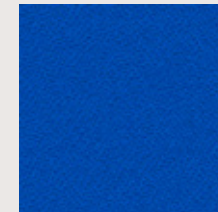
BOND 77



BOND 8078



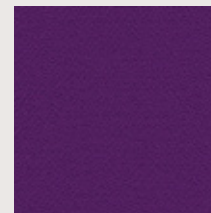
BOND 204



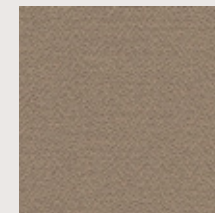
BOND 169



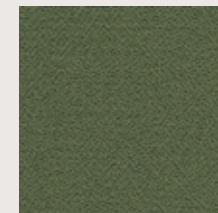
BOND 6098



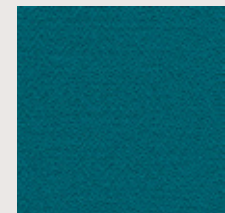
DUO 760



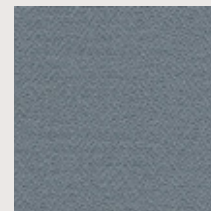
DUO 450



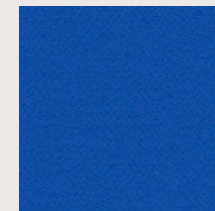
DUO 533



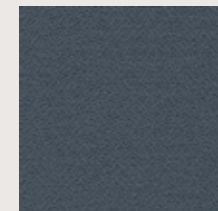
DUO 429



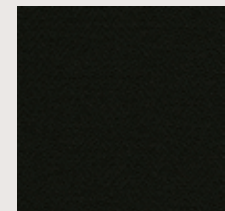
DUO 220



DUO 229



DUO 600



DUO 840

G2Addo

DATA SHEET

Composition:

80% polyester, 20% cotton.

Lightfastness:

5, ISO 105 B02, Method 2.

Abrasion:

40,000 Martindale ISO 12947-1, 2.

Resistance to pilling:

4, ISO 12945-2: 002.

Rubbing fastness in humid state:

3, ISO 105-X12: 2001.

Rubbing solvents:

4-5, ISO 105-X12: 2001.

Seam strength:

Warp 3mm. Weft 2mm, ISO 13936-2.

Tear strength:

Warp exceed 175.1N. Weft exceed 120.7N, EN ISO 13937-3.

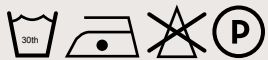
Flammability:

EN 1021 - 1 (cigarette).

With: 140cm

Weight: 365gr / m²

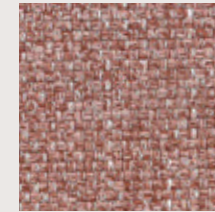
-



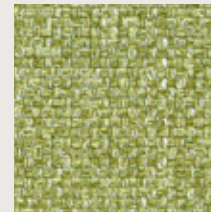
**Batch to batch variations may occur within commercial tolerances.*



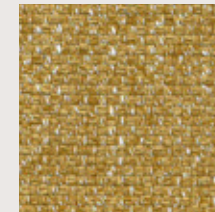
12



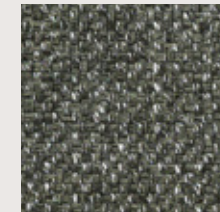
10



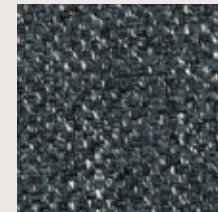
14



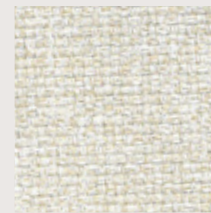
fifteen



16



eleven



5



6



7



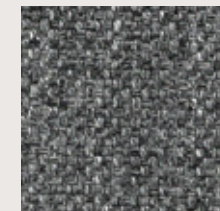
8



4



3



30



1

G2 Steve / West

DATA SHEET - STEVE

Composition:

100% polyester.

Light fastness:

5, ISO 105X12, ISO 12945-2.

Abrasion:

> 25,000 Martindale ISO 12947-2: 1998.

Resistance to pilling:

4-5, ISO 105X12, ISO 12945-2.

Dye fastness to rubbing:

Wet 4 - 5.

Dry 4-5, ISO 105X12, ISO 12945-2.

Seam strength:

Warp 3mm.

Weft 3mm, ISO 13936-2.

With: 140cm

Weight: 215gr / m²

-



**Batch to catch variations may occur within commercial tolerances.*



DATA SHEET - WEST

Composition:

75% polyester, 30% cotton.

Light fastness:

5, UNE 40187, BS 1006-B02.

Abrasion:

> 40,000 Martindale BS 5690, BS 2543: 1995.

Resistance to pilling:

4-5, ISO / DIS 12945-2.

Dye fastness to rubbing:

Wet 5, ISO 105-D01, UNE 40099. Dry 5,

ISO 105-C06, UNE 40029.

Seam strength:

Warp 3mm, BS 3320: 1988. Weft

3mm, BS 2543: 1995.

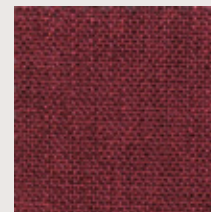
With: 140cm

Weight: 248gr / m²

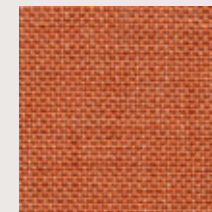
-



**Batch to catch variations may occur within commercial tolerances.*



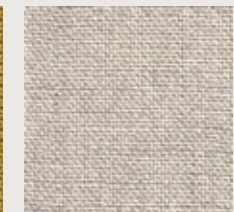
WEST 14



STEVE 24



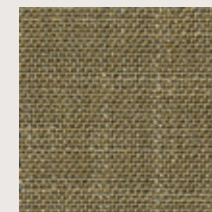
STEVE 23



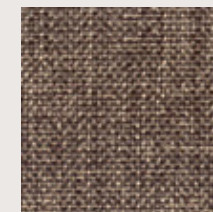
WEST 7



STEVE 27



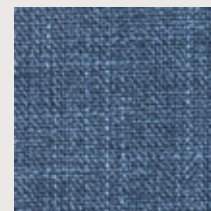
WEST 19



STEVE 13



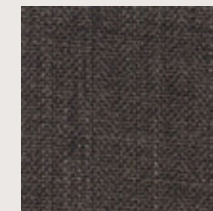
WEST 4



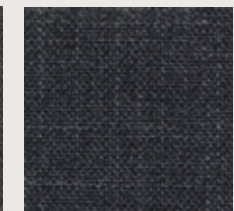
WEST 16



STEVE 18



WEST 12



WEST 1

G2 Pixel

DATA SHEET

Composition:

100% polyolefin.

Light fastness:

5 - 6, UNE-EN ISO 105-B02: 2001 + A1: 2002. Method 2.

Abrasion:

40,000 Martindale EN ISO 14465: 2004.

Resistance to pilling:

4-5, UNE-EN 14465: 2004.

Dye fastness to rubbing:

Wet 4 - 5. Dry 4 - 5, UNE-EN ISO 105-X12: 2003.

Tear Resistance:

Warp: 120N. Weft: 130N UNE-EN ISO 13937-3: 2001.

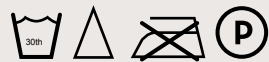
Flammability:

EN 1021-1: 2015 (cigarette) • BS 5852: 2006 (cigarette) • DIN 66084: 2003-7 classification P- c • CAL TB 117: 2013 Section 1: COVER FABRIC TEST NFPA 260: 2013 CLASS 1.

With: 140cm

Weight: 255gr / m²

-



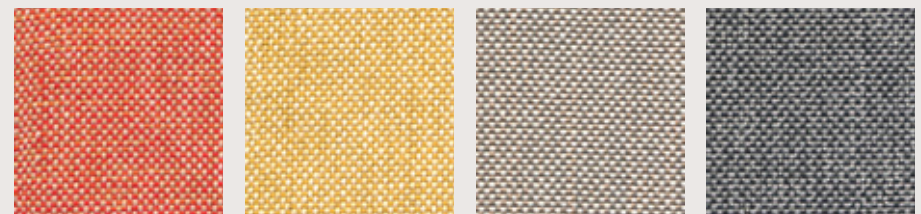
** Batch to batch variations may occur within commercial tolerances.*



3

12

40

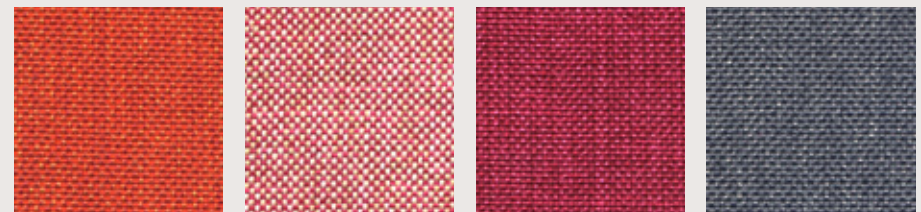


53

50

10

21



64

54

61

29



101

102

71

80

G2 Cora / Orum

DATA SHEET - CORA

Composition:

100% polyester.

Light fastness:

5 EN ISO 105-B02, Method 2.

Abrasion:

83,000 Martindale EN ISO 12947-1, 2.

Resistance to pilling:

4, EN ISO 12945-2: 2002.

Rubbing fastness in humid state:

5, ISO 105-X12: 2001.

Rubbing solvents:

5, ISO 105-X12: 2001.

Seam strength:

Warp 2.5mm. Weft 3.7mm, ISO 13936-two.

Tear strength:

Warp exceed 154.2N.

Weft exceed 112.3N, EN ISO 13937-3.

Flammability:

EN 1021 - 1 (cigarette).

With: 140cm

Weight: 330gr / m²



**Batch to catch variations may occur within commercial tolerances.*



DATA SHEET - ORUM

Composition:

100% polyester.

Light fastness:

4-5, ISO 105X12 ISO 12945-2.

Abrasion:

> 35,000 Martindale, ISO 12947-2 1998.

Resistance to pilling:

4-5, ISO 105X12 ISO 12945-2.

Dye fastness to rubbing:

Wet 4-5. Dry 4-5, ISO 105x12, ISO 12945-2.

Tear strength:

Warp exceed 63N, EN ISO 13937-3. Weft exceed 63N, EN ISO 13937-3 (A&B).

Seam strength:

Warp 6mm.

Weft 6mm, EN ISO 13936-2 (A).

With: 140cm

Weight: 450gr / m²



**Batch to catch variations may occur within commercial tolerances.*



CORA 3



ORUM 1



CORA 2



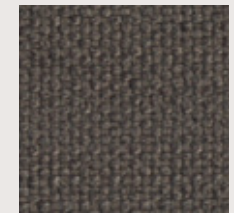
ORUM 4



CORA 14



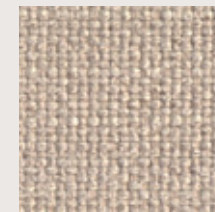
CORA 20



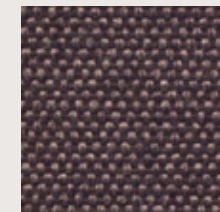
ORUM 10



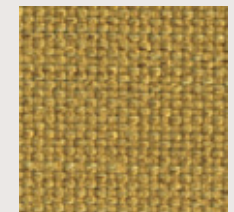
CORA 12



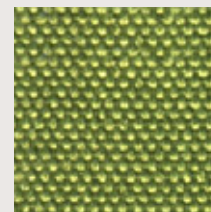
ORUM 8



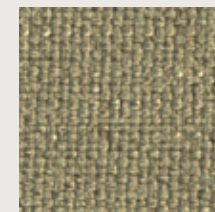
CORA 27



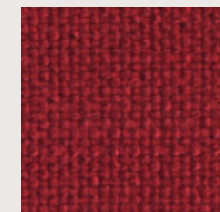
ORUM 11



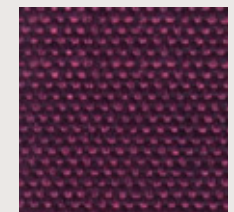
CORA 32



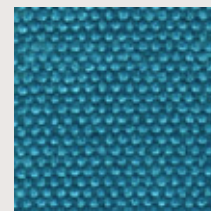
ORUM 19



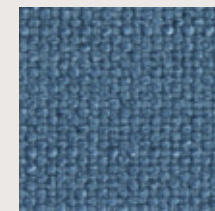
ORUM 14



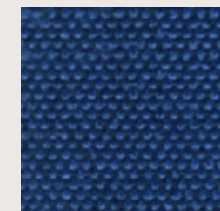
CORA 9



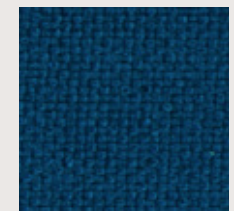
CORA 17



ORUM 13



CORA 18



ORUM 7

G2 Hilton

DATA SHEET

Composition:

100% polyester.

Lightfastness:

4, ISO 105 B02: 1994.

Abrasion:

> 25,000 Martindale ISO 12947-2: 1998.

Resistance to pilling:

4-5, ISO 12945-2.

Tear strength:

Warp 63N. Weft 63N, ISO13937-3: 2000.

Dye fastness to rubbing:

Wet 4-5. Dry 4-5, ISO 105X12: 2001.

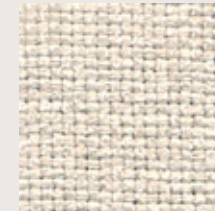
With: 140cm

Weight: 380gr / m²

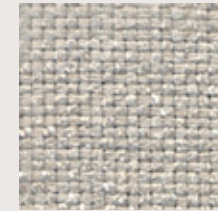
-



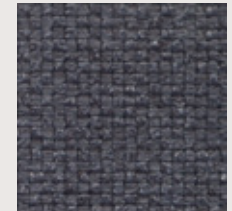
** Batch to batch variations may occur within commercial tolerances.*



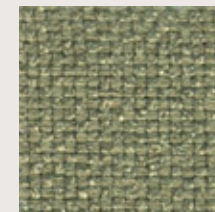
6



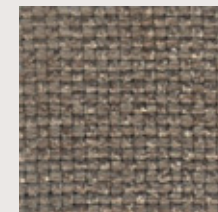
4



2



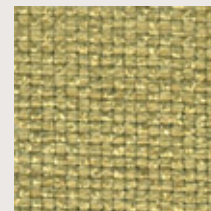
18



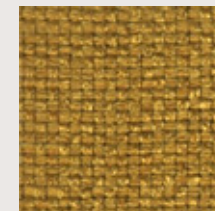
8



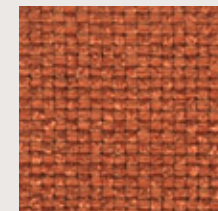
9



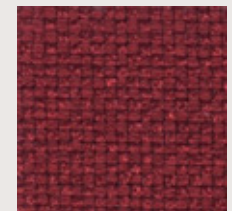
17



10



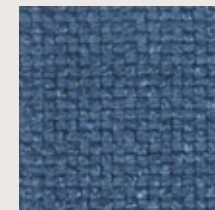
11



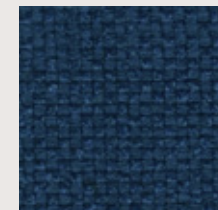
12



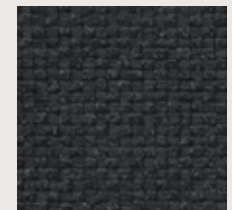
16



13



14



1

G2 Reno

DATA SHEET

Composition:

100% PVC

Light fastness:

6-7, ISO 105 B02.

Abrasion:

> 45,000 Martindale EN ISO 12947.

Breaking strength:

Warp 360. Weft 150

EN ISO 13934-1 • UNE-EN ISO 1421.

Tear strength:

Warp 23. Weft 26 EN ISO 13937-3.

Resistance to pilling:

5, ISO 12945-2: 2000.

Fastness to rubbing:

Wet 4-5. Dry 4-5, ISO 105 X12.

Flammability:

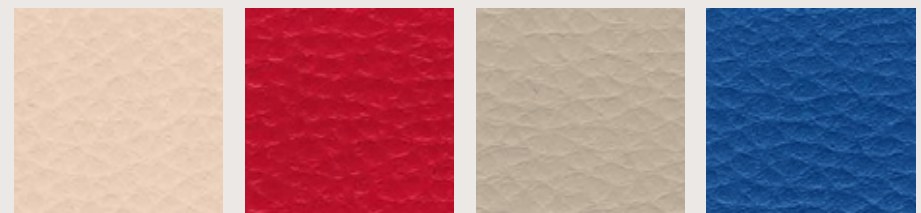
UNE - EN 1021: 1 & 2 • BS 5852 • EN 23 727-90 IR.

With: 140cm

Weight: 540gr / m²



** Batch to batch variations may occur within commercial tolerances.*



56

78

96

5

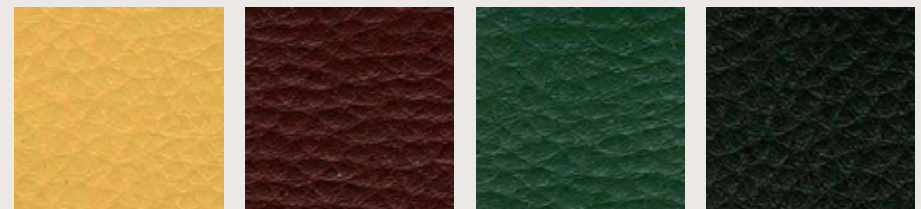


6

25

8

47



51

97

37

75

G3 Era

by Camira

DATA SHEET

Composition:

100% polyester.

Light fastness:

5, EN ISO 105 B02.

Abrasion:

≥100,000 Martindale EN ISO 12947.

Fastness to rubbing:

Wet 4. Dry 4, ISO 105 X12.

Flammability:

EN 1021 - 1 (cigarette) • EN 1021 - 2 (match) • BS 7176 Low Hazard • EN 13501-1 Adhered Class B, s1, d0 • EN 13501-1 Un-adhered Class C, s1, d0.

Environment:

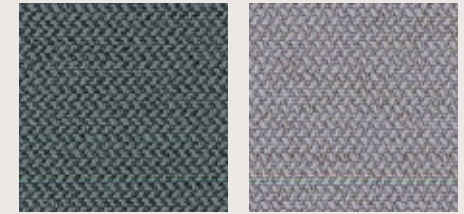
OEKO-TEX® Standard 100.

With: 140cm

Weight: 320gr / m²



**Batch to catch variations may occur within commercial tolerances.*



13

11



21

2

1

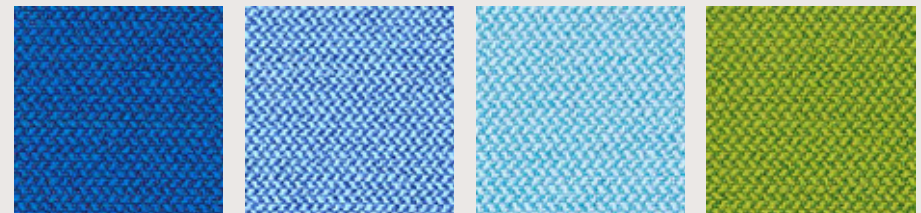


9

6

19

3



12

8

20

16

G3 Xtreme

DATA SHEET

Composition:

100% recycled polyester.

Light fastness:

6, EN ISO 105 B02.

Abrasion:

≥100,000 Martindale EN ISO 12947.

Fastness to rubbing:

Wet 4. Dry 4, ISO 105 X12.

Flammability:

EN 1021 - 1 (cigarette) • EN 1021 - 2 (match) • BS 7176 Low Hazard • BS 5852

Ignition Source 5 • BS 7176 MediumHazard

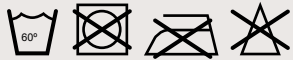
• DIN 4102 B1 • NF D 60-013 • ÖNORM B 3825 & A 3800-1 (with CMHR 58 kg / m³ of foam) • UNI 9175 Class 1 IM • BS 476 Part 7 Class 1.

Environment:

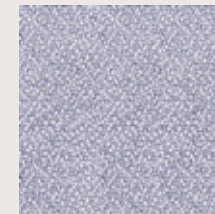
OEKO-TEX® Standard 100 • EU Ecolabel.

With: 140cm

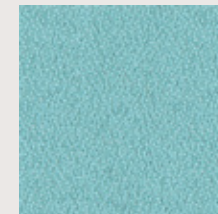
Weight: 310gr / m²



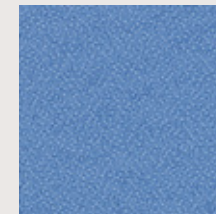
**Batch to catch variations may occur within commercial tolerances.*



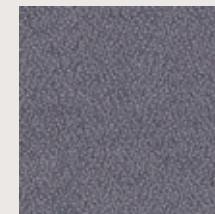
173



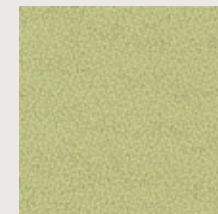
74



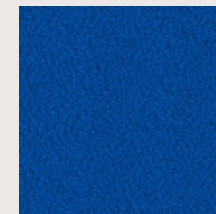
169



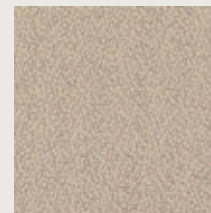
81



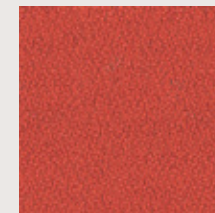
96



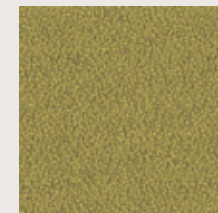
82



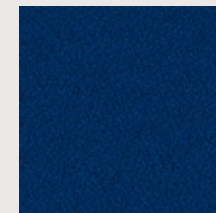
108



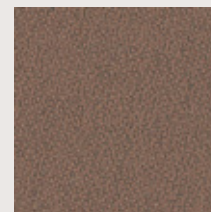
76



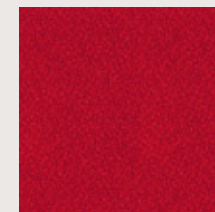
77



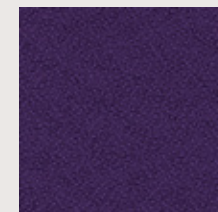
26



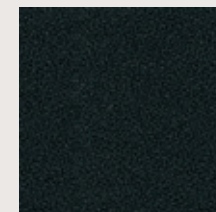
91



79



84



9

G3 Medley

by Gabriel

DATA SHEET

Composition:

100% polyester.

Light fastness:

5 - 7, EN ISO 105 B02.

Abrasion:

75,000 Martindale EN ISO 12947-2.

Resistance to pilling:

4, EN ISO 12945-2.

Fastness to rubbing:

Wet 4-5. Dry 4-5, ISO 105 X12.

Flammability:

BS EN 1021 1 & 2 Cigarette and Match • BS EN 1021-1 Cigarette • BS 5852 Part 1 0,1 Cigarette & match • BS 476 Part 7, class 2 • Class Uno UNI 9174 - UNI 8457 • ÖNORM B 3825-B2-3800-Q1 UK • CA TB 117-2013 • ASTM E 84.

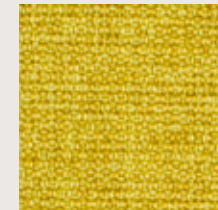
With: 140cm

Weight: 510gr / m²

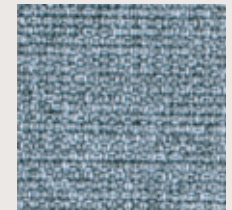


60° shrinkage max. 1%

* Batch to batch variations may occur within commercial tolerances.



62002



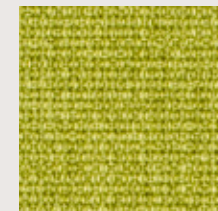
66008



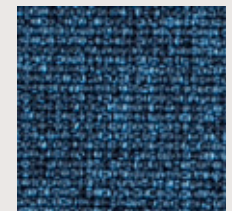
64019



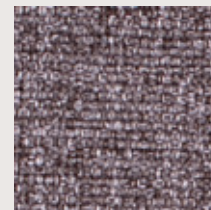
61003



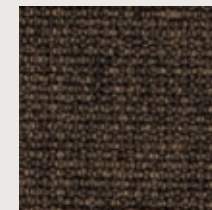
68002



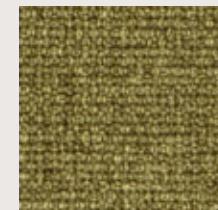
66010



65011



61004



67002



60999

G3 Mar

DATA SHEET

Composition:

12% PU, 70% PVC, 12% PES, 6% CO.

Light fastness:

6 - 7, UNE EN ISO 105-B02 / A1: 2002.

Abrasion:

> 300.00 cycles, Martindale EN ISO 5470-2: 2003 met. two.

Tear strength:

Longitudinal 95 N - CV 22.1%. Transversal 87 N - CV 4.2%, UNE EN ISO4674 / 1A.

Breaking strength:

Longitudinal 407 N - CV 9.1%.

Transversal 506 N - CV 3.1%, EN ISO 1421-2.

Color fastness to rubbing:

Wet: Longitudinal 5 - Transversal 5.

Dry: Longitudinal 5 - Transversal 5. UNE EN ISO 105-X12: 2003.

Resistance to shear:

> 50,000 cycles, UNE EN ISO 5981: 1998met. B.

Flammability:

Behavior level A, DIN EN 1021: 1 + 2.

Environment:

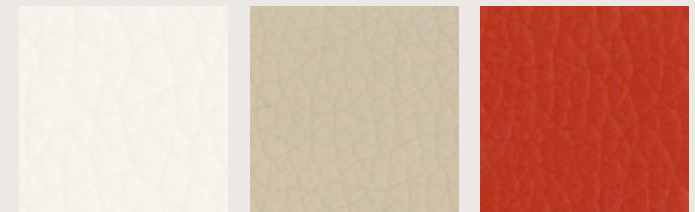
This quality fulfils the European most demanding norms with regard to its components and environmental protection.

With: 140cm

Weight: 600gr / m²

-
Maintenance: Clean and care the material frequently, with lukewarmwater and a damp cloth, preferably of micro fiber. Soiling may be treated with a mild soap and proceed next to its drying by using a hairdryer or, failing that, a dry cloth. It should be avoided that areas that have been treated for cleaning remain wet.

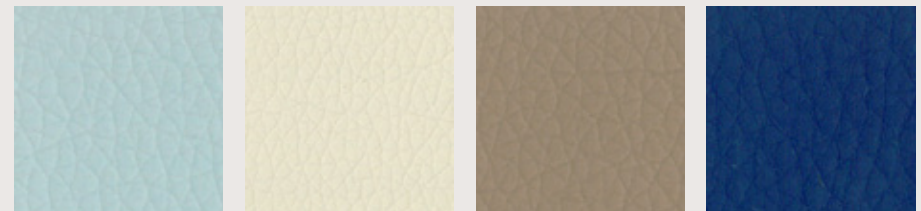
** Batch to catch variations may occur within commercial tolerances.*



70

76

55

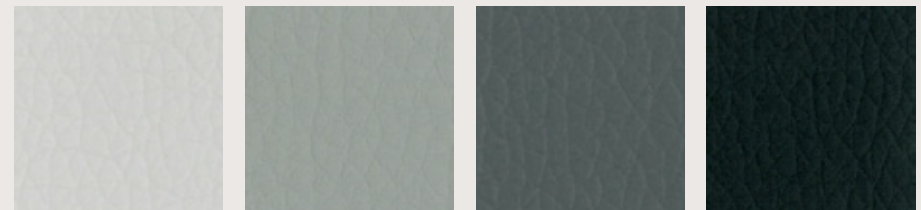


33

74

78

31



84

86

88

90

G4 Step

by Gabriel

DATA SHEET

Composition:

100% trevira CS.

Light fastness:

5-7, ISO 105 B02.

Abrasion:

100,000 Martindale EN ISO 12947.

Resistance to pilling:

4-5, ISO 12945-2.

Fastness to rubbing:

Wet 4-5. Dry 4-5, ISO 105 X12.

Flammability:

IMO MSC 307 (88) Annex 1 part 8 • MED • Certificate IMO

• DIN 4102 B1 • NFP 92-503 / 504/505 M1 • BS EN 1021 1 & 2 Cigarette and Match • BS EN 1021-1 Cigarette • BS 5852 Part 1 0.1 Cigarette & match • BS 5852 Crib 5 • ÖNORM B 3825-B1 -3800-Q1 UK • FAR / JAR 25.853 (a) (i) (ii) • BS 7176 Medium hazard • AM 18 - NF D 60-013- (only for fabric) • CA TB 117-2013 • Class Uno UNI 9175 Class 1 I EMME • DIN EN 13501-1 B-s1, d0.

Environment:

Oeko-Tex • EU Ecolabel • 100% free of heavy metals.

With: 140cm

Weight: 470gr / m²



60° shrinkage max. 3%

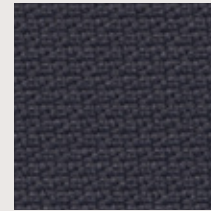
* Batch to catch variations may occur within commercial tolerances.



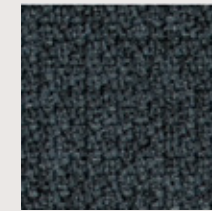
2440 - 61103



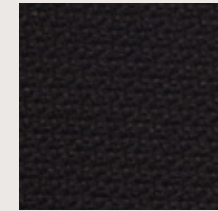
2442 - 61103



2440 - 66019



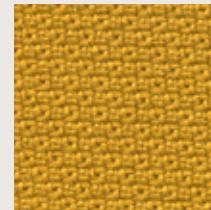
2442 - 66019



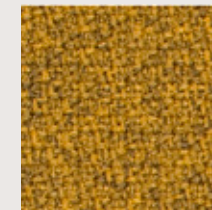
2440 - 60999



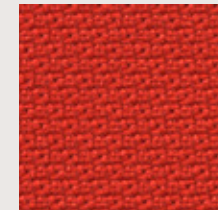
2442 - 60011



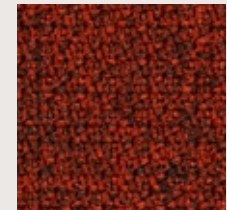
2440 - 62057



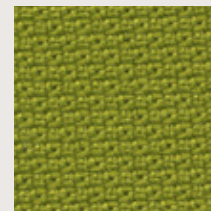
2442 - 62057



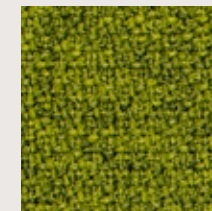
2440 - 36012



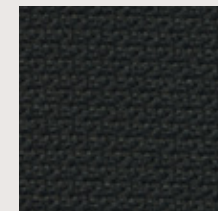
2442 - 63075



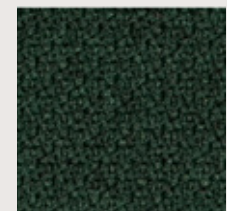
2440 - 68119



2442 - 68119



2440 - 68121



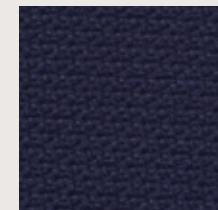
2442 - 68121



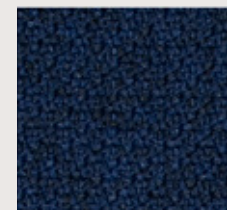
2440 - 67004



2442 - 67004



2440 - 65011



2442 - 65011

G4Aspect

by Camira

DATA SHEET

Composition:

75% trevira, 25% polyester.

Light fastness:

5, EN ISO 105 B02.

Abrasion:

≥50,000 Martindale EN ISO 12947.

Fastness to rubbing:

Wet 4. Dry 4, ISO 105 X12.

Flammability:

EN 1021 - 1 (cigarette) • EN 1021 - 2 (match) • BS

7176 Low Hazard • BS 5852 Ignition source 5 •

(over 50kg / m3 CMHR foam) • BS 7176 Medium

Hazard • (over 50kg / m3 CMHR foam)

• DIN 4102 B1 • NF D 60-013 (on 50kg / m3
CMHR foam) • ÖNORM B 3825 & A 3800-1 (on
58kg / m3 CMHR foam) • UNI 9175 Classe 1 IM.

Environment:

OEKO-TEX® Standard 100.

With: 140cm

Weight: 470gr / m²

-



**Batch to catch variations may occur within commercial tolerances.*



G4 Fusion

by Crevin

DATA SHEET

Composition:

60% new wool, 40% polypropylene.

Lightfastness:

5-6, ISO 105-B02: 1998,
ISO 105 B02 / A01: 2002.

Abrasion:

62,000 Martindale
EN ISO 12947-2: 1998 • 4-5, EN ISO 12947/4:
1998, EN 14465: 2003.

Resistance to pilling:

4-5, EN ISO 12945/2: 2000.

Fastness to rubbing:

Wet 4-5. Dry 4-5, ISO 105 X12.

Flammability:

BS5852 Source 0 / EN 1021-1: 2006 (cigarette) •
BS5852 Source 1 / EN 1021-2: 2006 (match).

Environment:

Oeko-Tex • ISO 14001 • 100% free
of heavy metals.

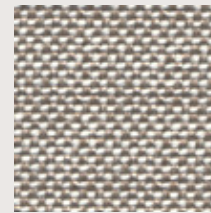
With: 140cm

Weight: 750gr / m²

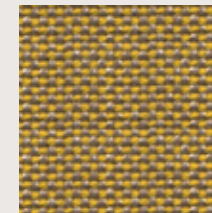
-



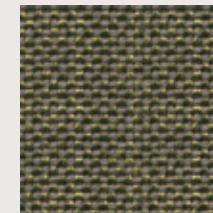
*Batch to batch variations may occur within
commercial tolerances.



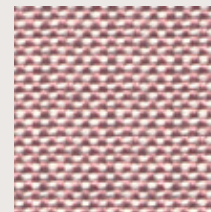
8



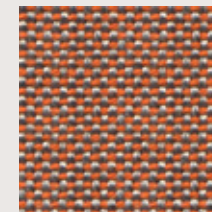
20



31



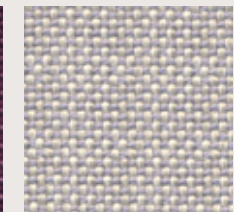
61



24



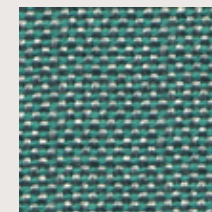
63



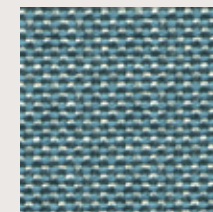
7



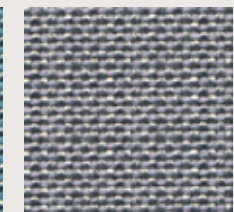
40



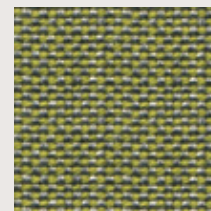
33



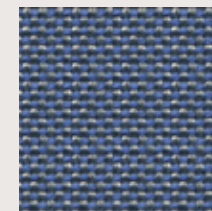
49



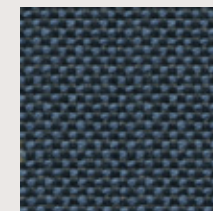
51



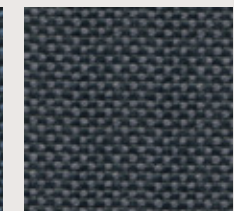
36



46



45



53

G4 Silver

by Spradling

DATA SHEET

Composition:

100% polyester.

Light fastness:

≥7,1000 hours, DIN 54004 / NTC 1479 Blue wood.

Abrasion:

100,000 Martindale EN ISO 12947.

Tensile strength:

Weft 233 N / cm. Warp 376 N / cm, ISO 1421 M1.

Tear strength:

Weft 25 N / cm. Warp 25 N / cm, ISO 4674-1 MB.

Characteristics:

Antimicrobial protection • Antibacterial protection
 • Antimycotic protection • Resistance to spitting and respiration.
 Urine resistance. Blood resistance • Waterproof • Oil resistance (Sunflower oil).

Flammability:

FMVSS 302 • IMORes. MSC.307 (88) - (2010 FTPCode) Annex 1 Part 8 • FAR 25.853 (A) Appendix F Part. I (a) (1) (ii) • UNE 23,727 90 (M2) • EN 1021 PART 1 & 2 • DIN 4102 (B2) • ÖNORMB 3825 • ÖNORMB 3800 Teil 1 • CALIFORNIAT.B. 117-2013 • UFAC Fabric - Class I • NFPA260 - Cover Fabric - Class I • NFP 92.503 (M2) • EN 71-2 • UNI 9175 (1. IM) • ECE R118.

With: 140cm

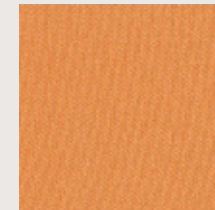
Weight: 685gr / m²



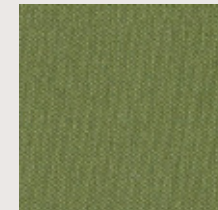
** Batch to batch variations may occur within commercial tolerances.*



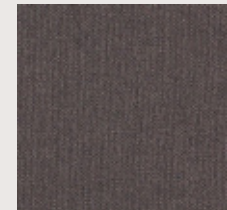
PERMABLOK
ADVANCED VINYL PROTECTION



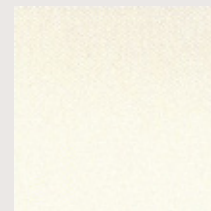
6062



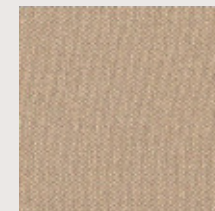
5020



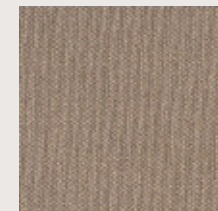
4024



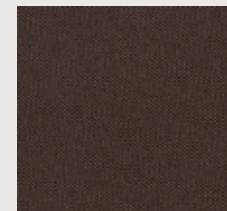
1077



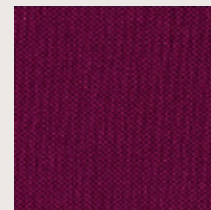
1010



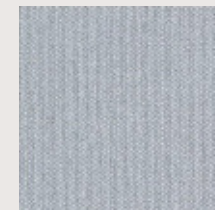
9



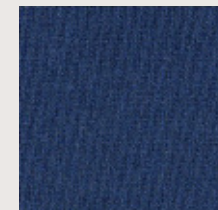
5



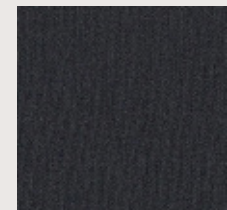
2016



4001



3007



9002

G4Valencia

by Spradling

DATA SHEET

Composition:

Topcoat: 100% Vinyl. Backing: 100% Polyester Hi-Loft2TM.

Light fastness:

1000 hours, XENOTEST DIN 54004 / NTC 1479.

Abrasion:

300,000 cycles of Martindale EN ISO 12947: 1999 Part 2.

Cold crack resistance:

- 23 ° C.

Characteristics:

Antimicrobial protection • Antibacterial protection • Antimycotic protection.

Flammability:

EU: EN 1021 Part 1 and 2 • ES: UNE 23.727-90 1R / M.2 • FR: NF P 92- 503 / M2 • DE: DIN 4102 B2 • IT: UNI 9175 (1987) / UNI 9175 / FA1 (1994) Classe 1.IM (UNO I EMME) • AT: ÖNORM B 3825, Gruppe 1 - Schwerbrennbares Verhalten • AT: ÖNORMA 3800 Teil 1, Qualmbildungsklasse Q1 - schwachqualmend • IMO FTP 2010 Code MSC.307 (88) Part 8 3.1 & 3.2 • US: FMVSS 302 • US: FAR 25/853 • (MED) Marine Equipment Directive (in the current version) • ECE R118.02 (replaces Directive 95/28 / CE) Annexes 6, 7 & 8 • EN 71- 2: 2006 + A1: 2007 - Toy safety - Part 2: Inflammability.

With: 140cm

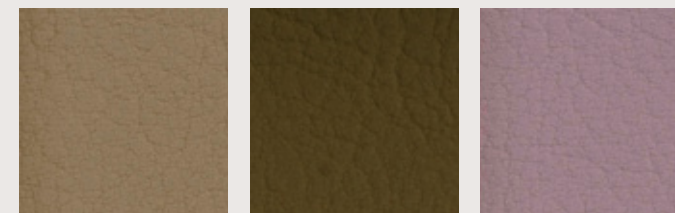
Weight: 685gr / m²



* Batch to batch variations may occur within commercial tolerances.



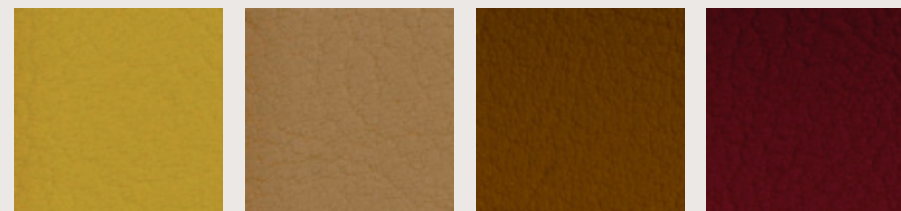
PERMABLOK
ADVANCED VINYL PROTECTION



2117

0002

2114

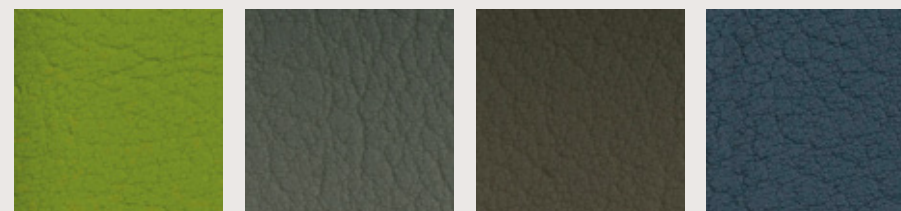


2111

2116

0035

2074

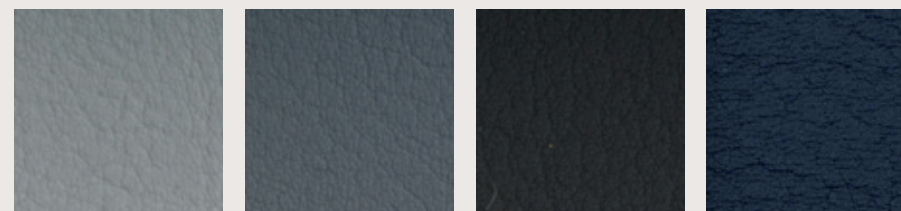


2110

4002

4001

5065

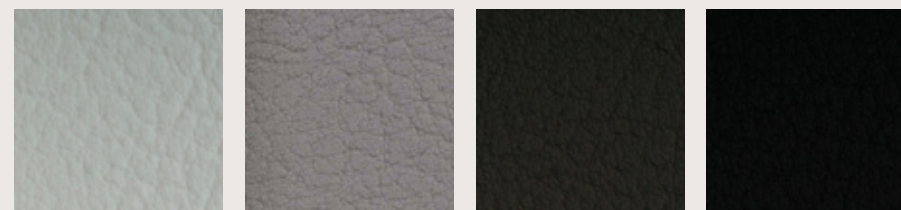


4040

4045

4003

2108



8032

4044

4041

9035

G5 Canvas

by Kvadrat

DATA SHEET

Designer:

Giulio Ridolfo.

Composition:

90% new wool, 10% nylon.

Lightfastness:

5-7, ISO 105-B02.

Abrasion:

100,000 Martindale EN ISO 12947.

Resistance to pilling:

4 - 5, EN ISO 12945.

Fire test:

AS / NZS 1530.3 • BS 5852 Crib 5 when flameprotected • BS 5852, ignition source 3 • BS 5852 part 1 • DIN 4102 B2 • IMO FTP Code 2010: Part 8 • NF D 60 013 • NFPA 260 • Önorm B1 / Q1 • SN 198 898 5.3 with treatment • UNI 9175 1IM • US Cal. Bull. 117-2013.

Environment:

Complies with EU ecolabel "The Flower" • 100% free of heavy metals.

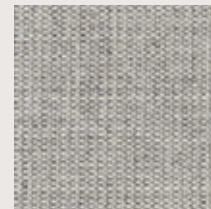
With: 140cm

Weight: 480gr / m²

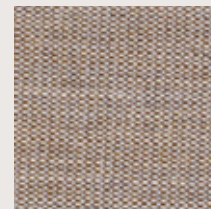
-



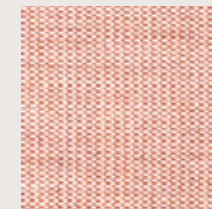
** Batch to batch variations may occur within commercial tolerances.*



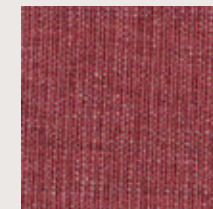
124



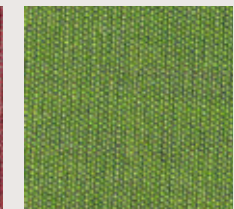
244



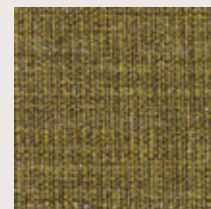
614



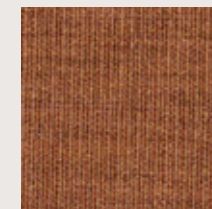
654



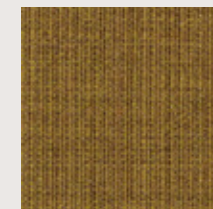
954



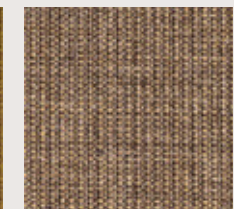
964



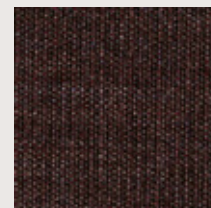
454



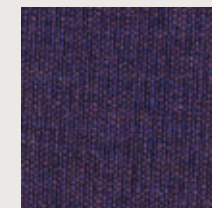
424



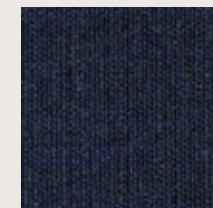
264



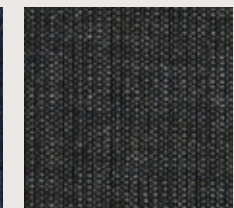
364



684



794



174

G5 Remix

by Kvadrat

DATA SHEET

Designer:

Giulio Ridolfo.

Composition:

90% new wool, 10% nylon.

Lightfastness:

5-7, ISO 105-B02.

Abrasion:

100,000 Martindale EN ISO 12947.

Resistance to pilling:

4, EN ISO 12945.

Fire test:

AS / NZS 1530.3 • BS 5852 Crib 5 with treatment • BS 5852 part 1 • EN 1021-1 / 2 • IMO FTP Code 2010: Part 8 • NF D 60 013 • NFPA 260 • Önorm B1 / Q1 • UNI 9175 1IM • US Cal. Bull. 117-2013.

Environment:

Complies with EU ecolabel "The Flower" • 100% free of heavy metals.

With: 140cm

Weight: 415gr / m²

-



** Batch to batch variations may occur within commercial tolerances.*



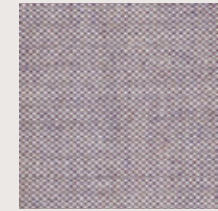
223



933



823



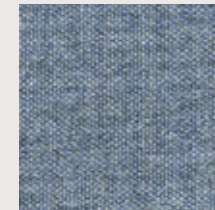
682



433



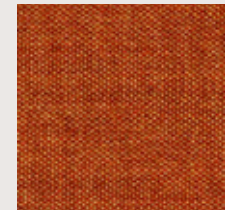
143



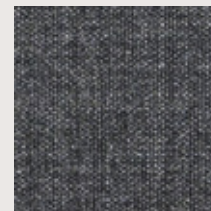
733



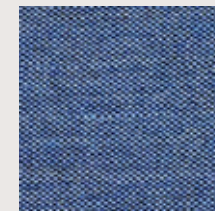
123



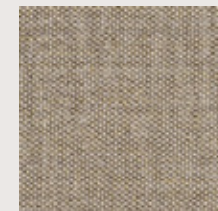
443



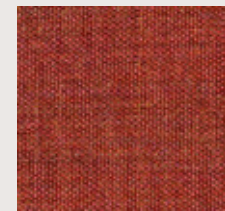
163



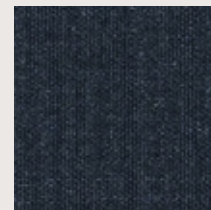
743



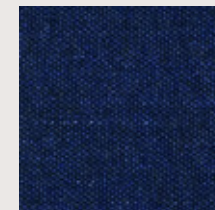
233



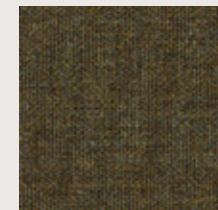
653



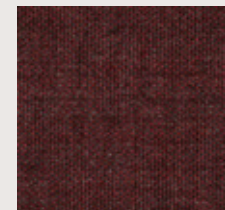
183



773



954



662

G5 Luna / Europost

by Gabriel

DATA SHEET - LUNA

Designer:

Anne Lasthein.

Composition:

90% wool, 10% polyamide.

Light fastness:

5 - 6 EN ISO 105-B02.

Abrasion:

70,000 Martindale EN ISO 12947-2.

Resistance to pilling:

3-4, EN ISO 12945-2.

Dye fastness to rubbing:

Wet 4 - 5. Dry 4 - 5, EN ISO 105x12.

Flammability:

BS EN 1021 1 & 2 Cigarette and Match • BS 5852

Part 1 0.1 Cigarette & match • ÖNORM B

3825-B2-3800-Q1 UK • CA TB 117-2013.

Environment:

Oeko-Tex • EU Ecolabel • 100%

free of heavy metals.

With: 140cm

Weight: 680gr / m²



* Batch to catch variations may occur within commercial tolerances.



DATA SHEET - EUROPOST

Designer:

Gabriel design team.

Composition:

100% wool.

Light fastness:

5 - 7, EN ISO 105-B02.

Abrasion:

50,000 Martindale EN ISO 12947.

Resistance to pilling:

4, EN ISO 12945-2.

Dye fastness to rubbing:

Wet 4 - 5. Dry 4 - 5, EN ISO 105x12.

Flammability:

BS 5852 Part 1 0,1 Cigarette & match • ÖNORMB

3825-B2-3800-Q1 UK • Class Uno UNI 9175 Class 1 I EMME • BS

EN 1021 1 & 2 Cigarette and Match • IMOMSC 307 (88) Annex 1

part 8 • MED Certificate IMO • CATB 117-2013 • ASTM E 84 •

NFPA 286 Room corner fire test • DIN 4102 B2 • BS 476 Part

7, class 1.

Environment:

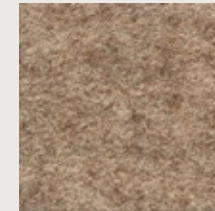
Oeko-Tex • EU Ecolabel • 100% free of heavy metals.

With: 140cm

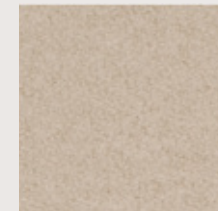
Weight: 800gr / m²



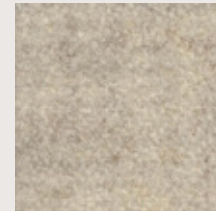
* Batch to catch variations may occur within commercial tolerances.



MOON 4101



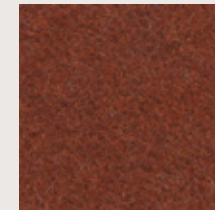
EUROPOST 61107



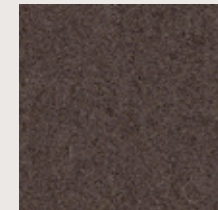
MOON 4006



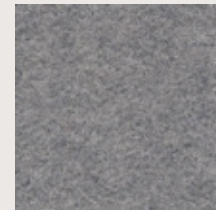
EUROPOST 63073



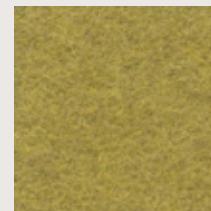
MOON 4301



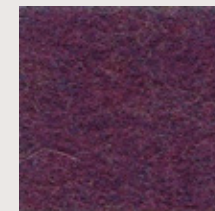
EUROPOST 61004



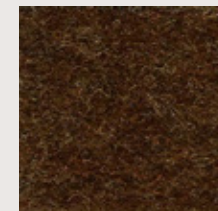
MOON 4009



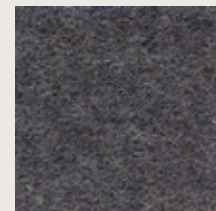
MOON 4204



MOON 4502



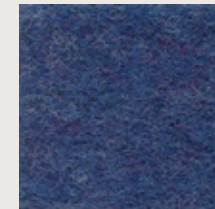
MOON 4111



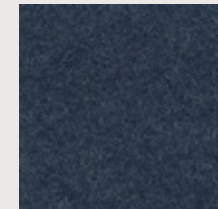
MOON 4010



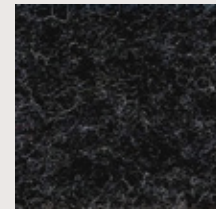
EUROPOST 66118



MOON 4605



MOON 4703



MOON 4011

G6 SteelCut Trio

by Kvadrat

DATA SHEET

Designer:

Frans Dijkmeijer and Giulio Ridolfo.

Composition:

90% new wool, 10% nylon.

Lightfastness:

5-7 ISO 105-B02.

Abrasion:

100,000 Martindale EN ISO 12947.

Resistance to pilling:

4, EN ISO 12945.

Fire test:

AS / NZS 1530.3 • AS / NZS 3837 class 2 • BS 5852 Crib 5 with treatment • BS 5852 part 1 • DIN 4102 B2 • EN 1021-1 / 2

• IMO FTP Code 2010: Part 8 • NF D 60 013 • NFPA 260 • Önorm B1 / Q1 • SN 198 898 5.3 with treatment • UNI 9175 1IM • US Cal. Bull. 117-2013.

Environment:

Complies with EU ecolabel "The Flower" • 100% free of heavy metals.

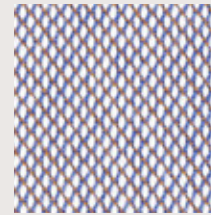
With: 140cm

Weight: 770gr / m²

-



**Batch to batch variations may occur within commercial tolerances.*



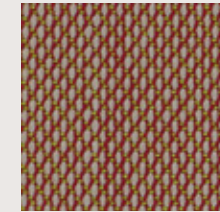
806



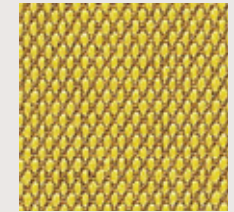
105



205



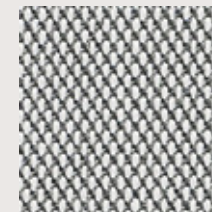
515



453



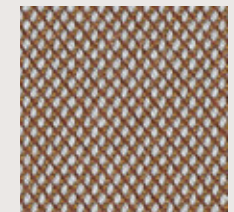
113



133



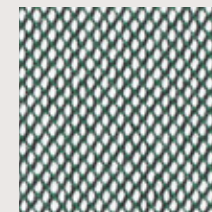
236



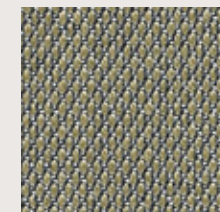
476



124



916



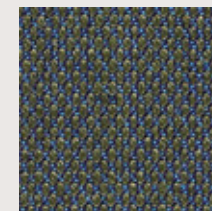
253



645



716



883



796



383

G6 Fiord

by Kvadrat

DATA SHEET

Designer:

Louise Sigvardt & Tone Barnung.

Composition:

92% new wool, 8% nylon.

Lightfastness:

5-7, ISO 105-B02.

Abrasion:

60,000 Martindale EN ISO 12947.

Resistance to pilling:

4 - 5, EN ISO 12945.

Fire test:

EN 1021-1 / 2 • BS 5852 part 1 • DIN 4102 B2 • NF D 60 013

• UNI 9175 1IM • US Cal. Bull. 117-2013 • IMO FTP Code 2010: Part 8 •
With flame retardant treatment: • BS 5852 Crib 5.

Environment:

Complies with EU ecolabel "The Flower" • 100% free of heavy metals.

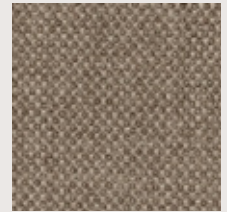
With: 140cm

Weight: 500gr / m²

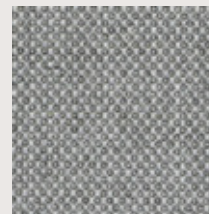
-



**Batch to catch variations may occur within commercial tolerances.*



271



151



121



251



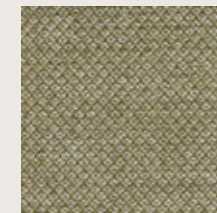
451



751



551



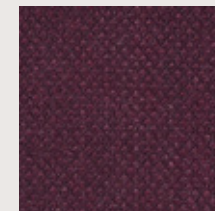
951



371



771



591



961



191

G7 Hallingdal

by Kvadrat

DATA SHEET

Designer:

Nanna Ditzel.

Composition:

70% new wool, 30% viscose.

Lightfastness:

5-7 ISO 105-B02.

Abrasion:

100,000 Martindale EN ISO 12947.

Resistance to pilling:

3, EN ISO 12945.

Fire test:

AS / NZS 1530.3 • AS / NZS 3837 • BS 5852 Crib 5 • BS5852 part 1 • DIN 4102 B2 • EN 1021-1 / 2 • IMO FTP Code 2010: Part 8 • NF D 60 013 • NFPA 260 • OnormB1 / Q1 • SN 198 898 5.3 with treatment • UNI 9175 1IM • US Cal. Bull. 117 - 2013

Environment:

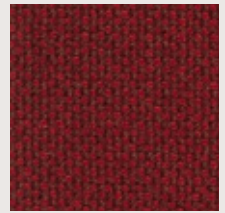
Complies with EU ecolabel "The Flower".

With: 140cm

Weight: 795gr / m²



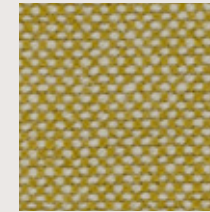
**Batch to catch variations may occur within commercial tolerances.*



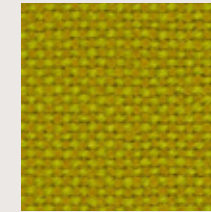
687



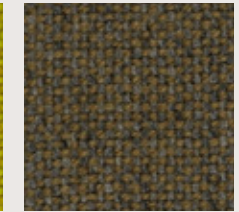
200



407



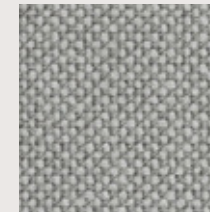
420



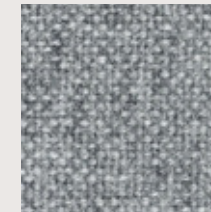
227



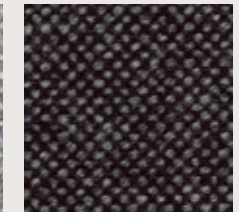
100



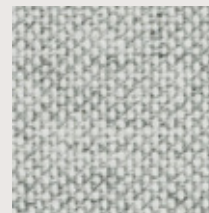
123



130



368



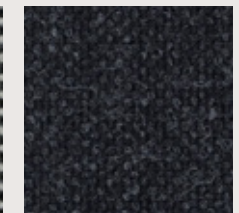
110



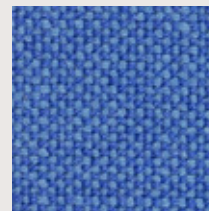
116



126



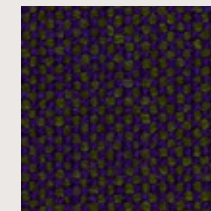
180



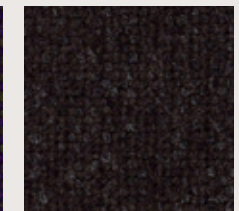
733



773



968



376

G10 Leather

DATA SHEET

Composition:

Cow leather.

Light fastness:

≥4 / 5, UNI EN ISO 105B02.

Fastness to rubbing:

Wet ≥4 (150 cycles). Dry ≥4 (500 cycles). Perspiration ≥4 (80 cycles), UNI EN ISO 11640: 1998 - 11641 (pH8).

Tear strength:

> 20N, EN ISO 3377-1.

Determination of PH:

> 3.5, EN ISO 4045.

Adhesion of the finish:

≥2, UNI EN ISO 11644.

Determination of dry flex resistance:

Without damage, UNI EN ISO 5402.

Fire resistance:

Ignition source 0 (cigarette). Ignition source 1 (match), BS 5852-1979, BS EN 1021-1-2: 2006.

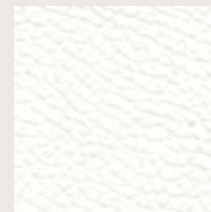
Thickness: 0.9 - 1.1mm

Average surface: 4.5m²

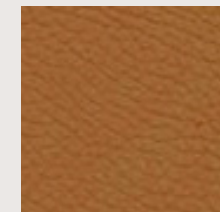
-

Maintenance: Wash with neutral soap and water or with a cleaning product for leather.

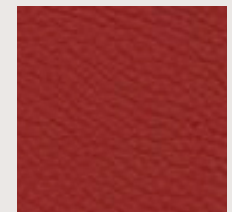
** Batch to catch variations may occur within commercial tolerances.*



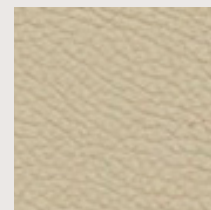
207



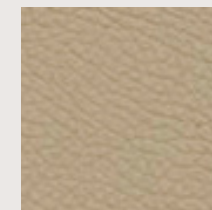
214



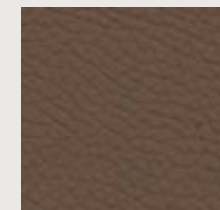
218



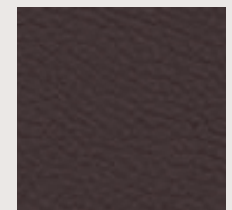
224



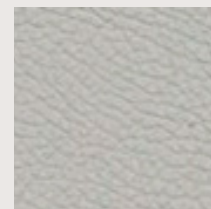
201



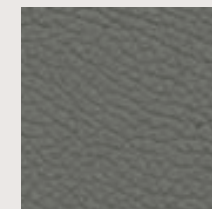
216



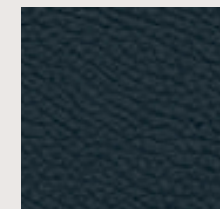
203



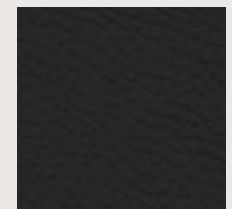
219



208



209



204

G11 Leather

DATA SHEET

Composition:

Cow leather.

Light fastness:

≥5, UNI EN ISO 105B02.

Fastness to rubbing:

Wet ≥4 (80 cycles). Dry ≥4 (500 cycles).

Perspiration ≥4 (50 cycles), UNI EN ISO 11640 - 11641.

Tear strength:

≥20N, EN ISO 3377-1.

Determination of PH:

≥3.5 ≤0.7 EN ISO 4045.

Adhesion of the finish:

≥2.5N / 10mm, UNI EN ISO 11644.

Determination of dry flex resistance:

> 50,000 cycles, UNI EN ISO 5402-1.

Fire resistance:

Ignition source 0 (cigarette),

ignition source 1 (match), BS 5852-1: 79.

Thickness: 0.9 - 1.1mm

Average surface: 4.8 - 5.0m²

-

Maintenance: Wash with neutral soap and water or with a cleaning product for leather.

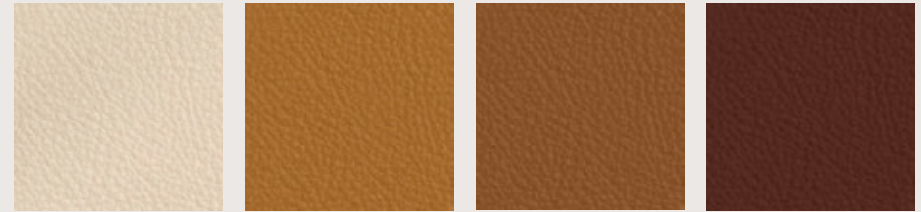
** Batch to batch variations may occur within commercial tolerances.*



333

348

346



320

331

332

344

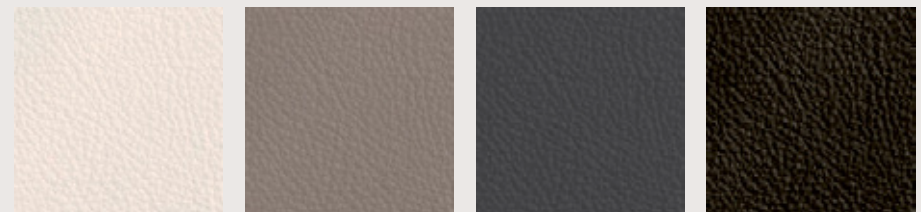


324

362

375

326

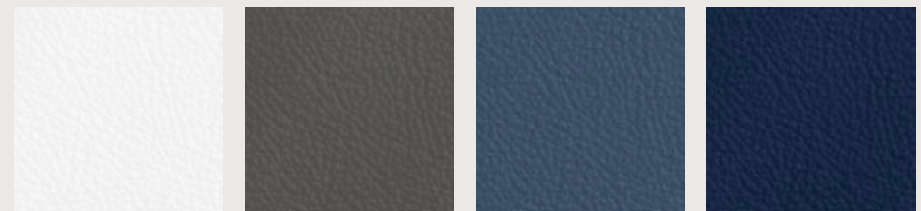


317

321

325

328



311

322

357

358