

INCLASS

SWATCH CARD / FINISHINGS
MUESTRARIO DE ACABADOS
FINITIONS

CrestlineTM

Furniture Systems

INDEX

MATERIALS — MATERIALES — MATÉRIAUX

WOOD

Standard & optional — 3

METAL

Standard & optional — 6

POLYETHYLENE

Standard & optional — 7

WOOD FINISHINGS

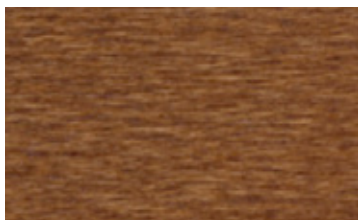
acabados de madera / bois finitions

Crestline™

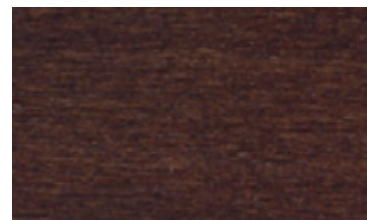
BEECH VENEER / CHAPA DE HAYA / PLACAGE HÊTRE



NATURAL / NATURAL / NATUREL



WALNUT STAIN / TINTE NOGAL / TEINTÉ NOYER

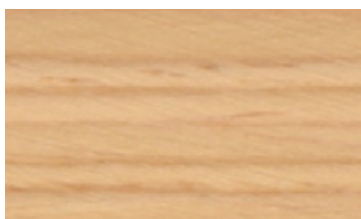


WENGE STAIN / TINTE WENGUÉ / TEINTÉ WENGE

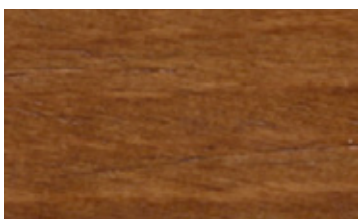


BLACK STAIN / TINTE NEGRO / TEINTÉ NOIR

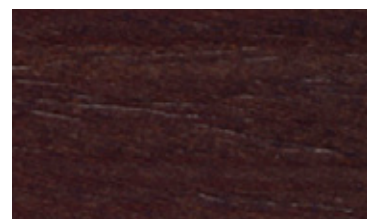
OAK VENEER / CHAPA DE ROBLE / PLACAGE CHÊNE



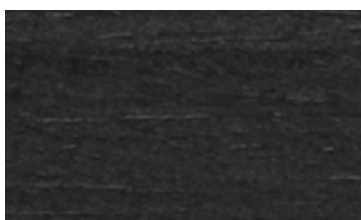
NATURAL / NATURAL / NATUREL



WALNUT STAIN / TINTE NOGAL / TEINTÉ NOYER

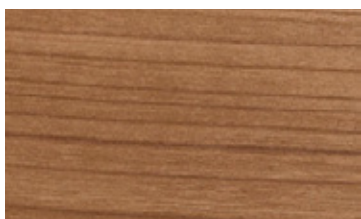


WENGE STAIN / TINTE WENGUÉ / TEINTÉ WENGE



BLACK STAIN / TINTE NEGRO / TEINTÉ NOIR

WALNUT VENEER / CHAPA DE NOGAL / PLACAGE NOYER



NATURAL / NATURAL / NATUREL

WOOD FINISHINGS

acabados de madera / bois finitions

Crestline™

LACQUERED MDF / MDF LACADO / MDF LAQUÉ



Y62 - MUSTARD



B40 - MARINE GREEN



G36 - NAVY BLUE



O25 - CLAY ORANGE



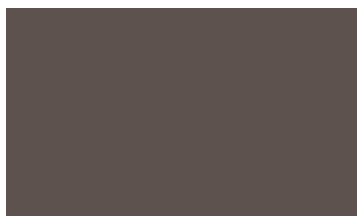
V16 - TURQUOISE GREEN



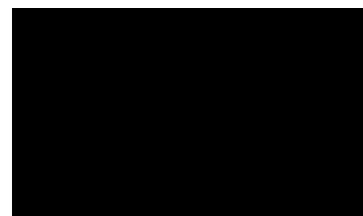
B44 - SKY BLUE



P70 - ROSE



M56 - COFFEE BROWN



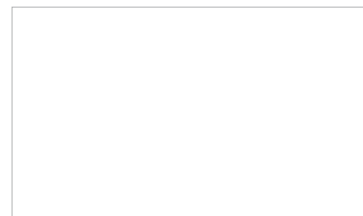
B00 - BLACK



G42 - LIGHT GREY



M82 - STONE



W01 - WHITE



G49 - ANTHRACITE

TABLE TOPS FINISHINGS

acabados de tableros / finitions plateaux

Crestline™

MDF WITH HPL LAMINATE / MDF CON HPL LAMINADO / MDF AVEC HPL LAMINÉ



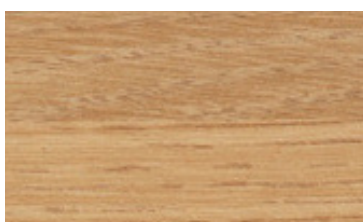
CHARCOAL



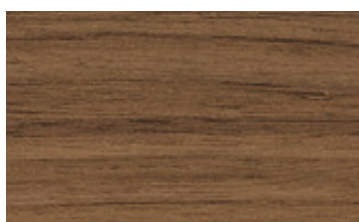
NEUTRAL GREY MEDIUM



TORTORA

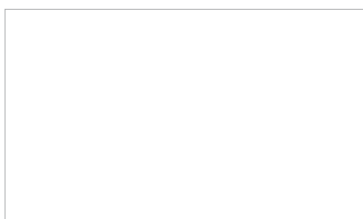


OAK

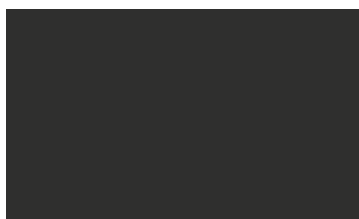


WALNUT

SOLID HPL



WHITE



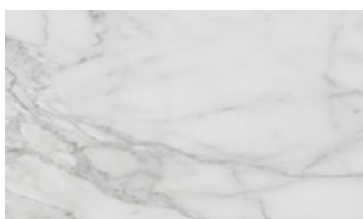
BLACK

SOLID HPL FENIX NTM®

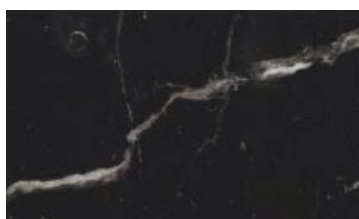


BLACK

NATURAL MARBLES / MÁRMOLES NATURALES / MARBLES NATURELLES



WHITE CARRARA



BLACK MARQUINA

METAL FINISHINGS

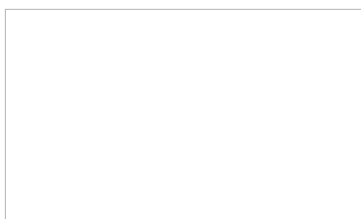
acabados metálicos / finitions métalliques

Crestline™

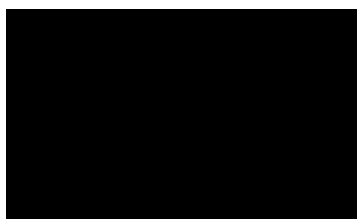


CHROME

STANDARD COLOURS / COLORES ESTÁNDAR / COULEURS STANDARDS



W01 - WHITE



B00 - BLACK



ALUMINUM

OPTIONAL COLOURS / COLORES OPCIONALES / COULEURS OPTIONNELLES



Y62 - MUSTARD



B40 - MARINE GREEN



G36 - NAVY BLUE



O25 - CLAY ORANGE



V16 - TURQUOISE GREEN



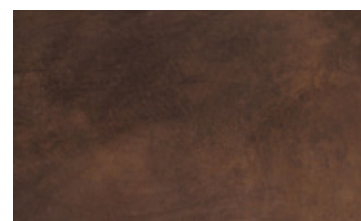
B44 - SKY BLUE



P70 - ROSE



M56 - COFFEE BROWN



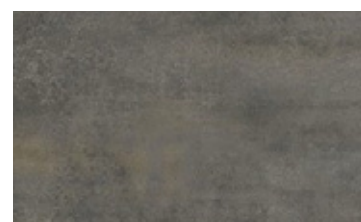
RUST BROWN



G42 - LIGHT GREY



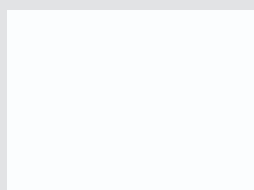
M82 - STONE



RUST GREY

ROTOMOLDED POLYETHYLENE

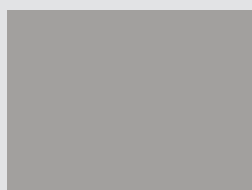
STANDARD PLASTIC COLOURS



White



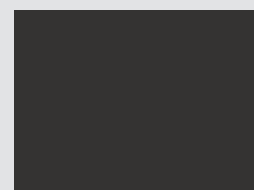
Stone



Grey

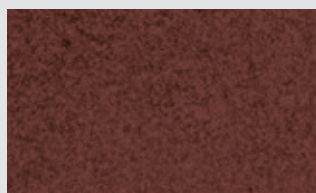


Anthracite

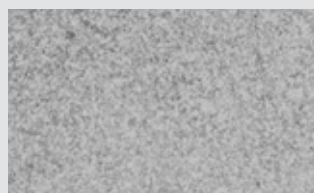


Black

COMPOSED PLASTIC COLOURS

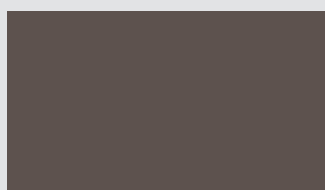


Rust brown

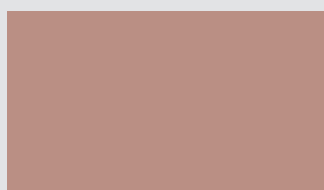


Concrete

STANDARD PAINTED COLOURS



Coffee brown



Rose



Clay orange



Mustard



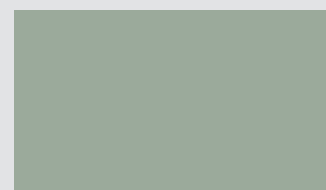
Navy blue



Sky blue



Marine green

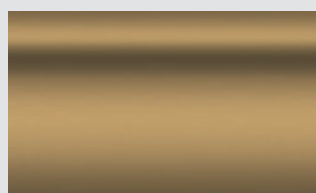


Water green

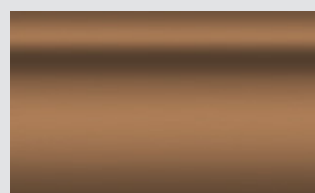
METALLIC PAINTED COLOURS



Silver



Gold



Copper

SPOKE PAINTED COLOURS

***OPTIONALLY** the bases can be painted in any of the colours of the RAL chart in a matt or gloss finish. For more information ask our sales department.

***OPCIONALMENTE** las bases se pueden pintar en cualquier color de la carta RAL en mate o brillo. Para más información consulte a nuestro departamento comercial.

***EN OPTION** les bases peuvent être peintes dans toutes les couleurs de la carte RAL en mat ou brillant. Consultez notre département commercial pour plus d'informations.

***OPTIONAL** können die Untergestelle in jeder Farbe der RAL-Farbpalette gestrichen und matt oder glänzend lackiert werden. Weitere Information erhalten Sie von unserer Verkaufsabteilung.